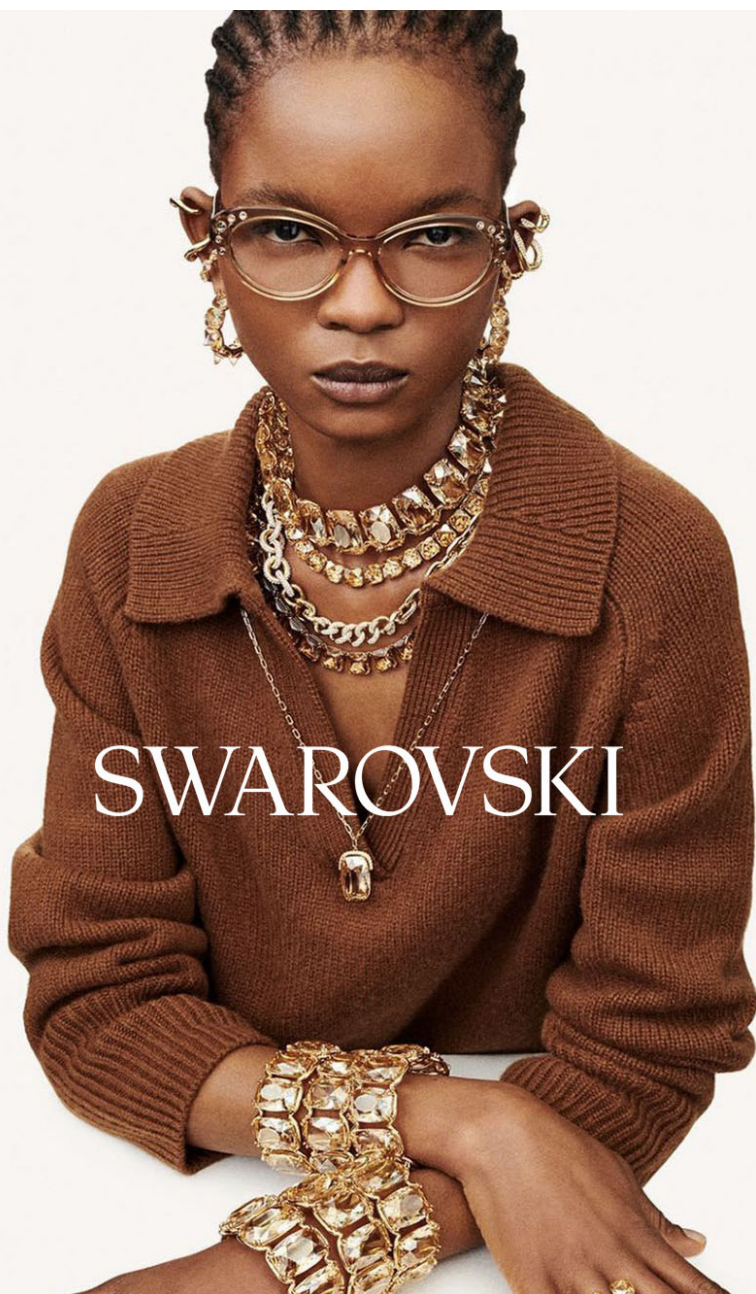


MODELWERK



SWAROVSKI

GRACE QUAYE



[FW 23] "LUNAR DELIVERY" Look 0



Alexander
McQUEEN



GRACE: Tailored Blazer Jacket, Harness Collar Shirt, Eyelets Skirt, New York Sunglasses, Tire Wheel Ear Cuffs, Lunar Mule

größe: 180
schuhe: 41

oberw.: 76
augen: braun

taille: 59
haare: schwarz

hüfte: 89